

## 2018/19 Pupil Premium Report Dated: 11/10/2018



### St James' Church of England VA Primary School

Headteacher's Name Ms Maria Soulsby  
 URN 109614

St James' is a smaller than average primary school, located in a village just outside of Bedford. In September 2017, the school transitioned from being a lower school to becoming a primary school, as part of Bedford Borough Council's move from a three-tier system to two-tier. A major building project began in April 18, and the first phase was completed in September 2018. The current Year 6 is the first cohort who will undertake Statutory KS2 assessments in 2019.

Because we have changed to a primary school, our school context is changing. Numbers on roll are increasing; we now have 158 children on roll. Mobility is increasingly becoming an important factor to consider when evaluating school effectiveness: in July 2018, 17.6% of the school population left the school, in September 2018, 28% of the school population were new to the school.

### 2018/19 Key Information

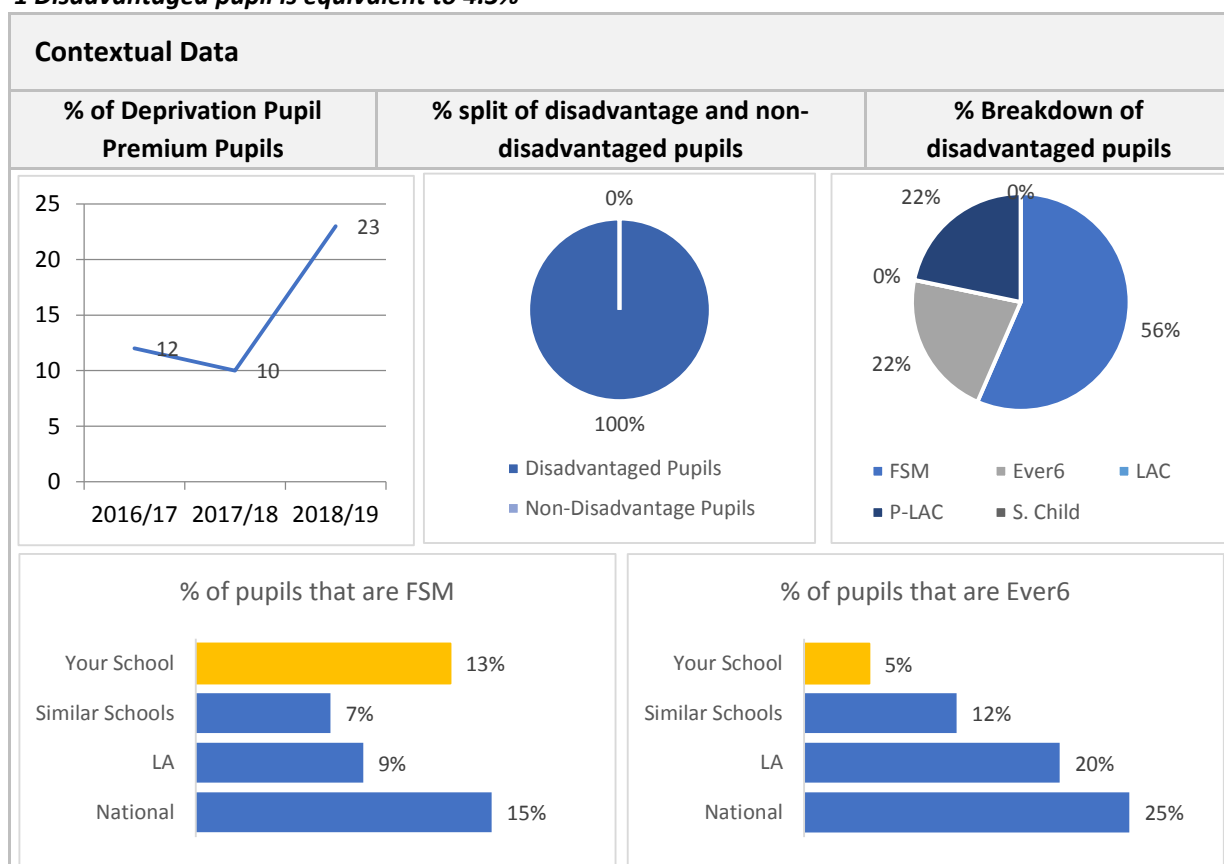
Pupil Premium Coordinator	Maria Soulsby	Date of last Pupil Premium Review	11/10/2018
Pupil Premium Link Governor	Alan Eckett-Brown	Date of next Pupil Premium Strategy Review	11/10/2018
Is the Pupil Premium statement on the school website	Yes	Date of when the website was last updated	11/10/2018

Pupil Summary	2018/19		2017/18		2016/17	
Number of Eligible Pupils (Deprivation)	23	14.6%	10	8.7%	12	10.8%
		LOW		LOW		LOW

**2018/19 Pupil Premium Report for St James' Church of England VA Primary School**

2018/19 Current Position By Year Group		As at 10.10.18						
	Number on Role	FSM Pupils	Ever6 Pupils	LAC Pupils	Post LAC Pupils	Service Children	Total Disadvantage	Total % Disadvantage
Year R	1	0	0	0	1	0	1	100%
Year 1	4	1	0	0	3	0	4	100%
Year 2	3	3	0	0	0	0	3	100%
Year 3	2	2	0	0	0	0	2	100%
Year 4	4	4	0	0	0	0	4	100%
Year 5	6	2	3	0	1	0	6	100%
Year 6	3	1	2	0	0	0	3	100%
<b>TOTAL</b>	<b>23</b>	<b>13</b>	<b>5</b>	<b>0</b>	<b>5</b>	<b>0</b>	<b>23</b>	<b>100%</b>

**1 Disadvantaged pupil is equivalent to 4.3%**

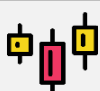


## 2018/19 Pupil Premium Report for St James' Church of England VA Primary School



### Historic Pupil Premium Data (Whole School) 2015/16 - 2017/18

Year	FSM	Ever6 Pupils	Total PP	Funding (£)	% of cohort
2017/18	6%	9%	10	£13,200	9%
2016/17	6%	9%	12	£15,840	11%
2015/16	4%	11%	12	£15,840	12%



### 2018/19 and 2017/18 Identified Barriers to Learning

2018/19			2017/18		
12	Internal	4	0	Internal	0
	External	8		External	0
	Not Specified	0		Not Specified	0

### Summary of Barriers to Learning

<b>A</b>	attainment in reading at EYFS & KS1, due to depressed speaking & listening skills, phonic knowledge on entry
<b>B</b>	attainment in RWM within KS2, especially within Year 5
<b>C</b>	Increasing levels of mobility into school, mean that many upper KS2 pupils have significant gaps in learning
<b>D</b>	attendance of most vulnerable learners has dipped
<b>E</b>	limited vocabulary use & understanding
<b>F</b>	lower levels of confidence and limited self belief - growth mindset

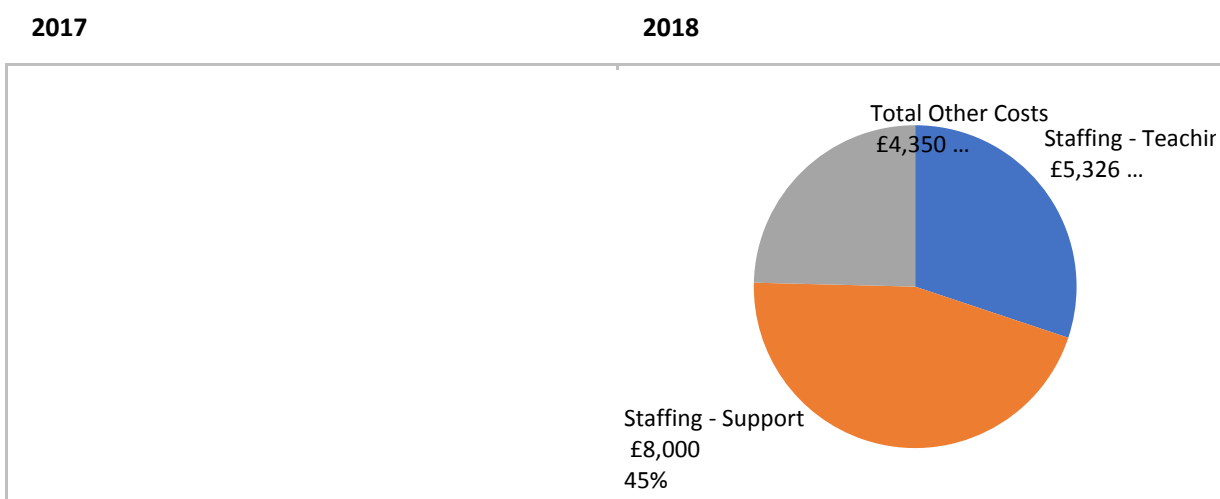
## 2018/19 Pupil Premium Report for St James' Church of England VA Primary School



### 2018/19 and 2017/18 Financial Summary (Deprivation Pupil Premium)

	2018/19	2017/18
Total Pupil Premium Allocation	£15,840	£13,200
Total Pupil Premium Expenditure	£17,676	£0
Surplus / Deficit	<b>-£1,836</b>	£13,200

### Spend by Category in 2017 and 2018



2018/19 Pupil Premium Report for St James' Church of England VA Primary School



Results Data - EYFS & KS1 2019 Forecast Data

EYFS Forecast Data		Disadvantaged Pupils		All Pupils	
% of pupils achieving a good level of development		↑ <b>100%</b>	Nat. Av 54%	↑ <b>75%</b>	Nat. Av 71%

KS1 Forecast Data		Disadvantaged Pupils		All Pupils	
% of pupils meeting the expected standard in the Phonics Screening Test		↑ <b>75%</b>	Nat. Av 70%	↑ <b>85%</b>	Nat. Av 81%
Percentage of pupils forecasted to be at the expected standard by	READING	↑ <b>67%</b>	Nat. Av 63%	↑ <b>80%</b>	Nat. Av 76%
	WRITING	↑ <b>67%</b>	Nat. Av 54%	↑ <b>75%</b>	Nat. Av 68%
	MATHS	↑ <b>67%</b>	Nat. Av 62%	↑ <b>80%</b>	Nat. Av 75%
Percentage of pupils forecasted to be working at a greater depth by	READING	↑ <b>67%</b>	Nat. Av 14%	↑ <b>35%</b>	Nat. Av 25%
	WRITING	↑ <b>33%</b>	Nat. Av 8%	↑ <b>35%</b>	Nat. Av 16%
	MATHS	↑ <b>67%</b>	Nat. Av 11%	↑ <b>35%</b>	Nat. Av 21%

Arrows compare against 2018 National average

**Key Headlines and Actions - EYFS and KS1**

EYFS - NLT EAL Early Words project, early introduction to phonics, devt of outdoor area to include areas which reflect internal learning environment, focus on good speaking & listening  
 KS1 - daily reading for most vulnerable, vocabulary development/extension, more staff trained RWI, RWI manager to monitor PPG progress closely, support for home learning

## 2018/19 Pupil Premium Report for St James' Church of England VA Primary School



### Results Data - KS2 2019 Forecast Data

KS2 Forecast Data	Disadvantaged Pupils		All Pupils	
Percentage of pupils meeting the expected standard (RW&M)	↓ 0%	Nat. Av 48%	↑ 77%	Nat. Av 64%
Percentage of pupils achieving a high standard (RW&M)	↓ 0%	Nat. Av 4%	↑ 18%	Nat. Av 10%
% Achieving Expectations in Maths	↓ 0%	Nat. Av 63%	↑ 82%	Nat. Av 76%
% Achieving Expectations in Reading	↓ 33%	Nat. Av 60%	↑ 86%	Nat. Av 75%
% Achieving Expectations in GP&S	↓ 33%	Nat. Av 67%	↓ 77%	Nat. Av 78%
% Achieving Expectations in Writing	↓ 33%	Nat. Av 66%	↓ 77%	Nat. Av 78%

Arrows compare against 2018 National average

### Key Headlines and Actions - KS2

Small cohorts of PPG mean that care has to be taken when considering percentages (in some year group each PPG can represent 100%). In our school, we have many children who have more needs and vulnerability than simply PPG - many also have SEND, EAL needs. Because of this, we track every individual child carefully to ensure expected progress is made, regardless of need.

There is a particular focus in Y5 where there are a significant numbers of PPG, most of whom have joined the school in the past 12 months. We have identified gaps in learning which need to be quickly addressed. Interventions are finely tuned to meet needs of learners, based upon needs led analysis of evidence, data & documentation and there is a clear timetable to ensure these take place; these are reviewed at half termly intervals to ensure impact is evident.

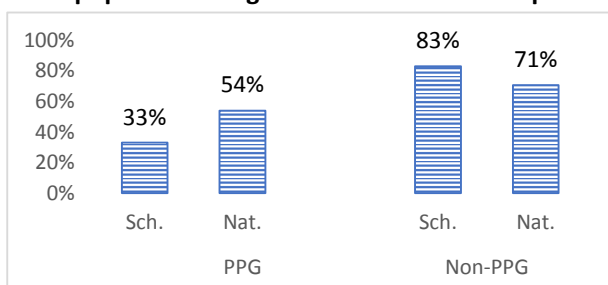
## 2018/19 Pupil Premium Report for St James' Church of England VA Primary School



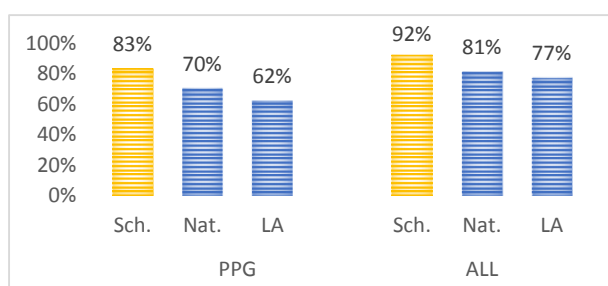
### 2017/18 Benchmarking Data

#### 2017/18 Benchmarking Data EYFS and KS1

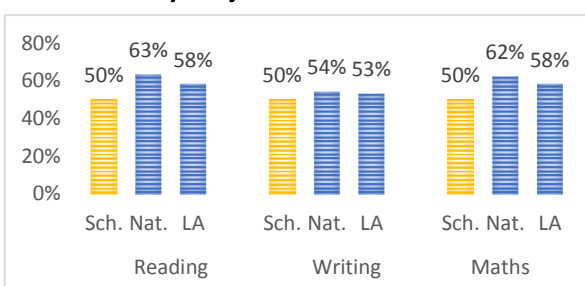
##### % of pupils achieving a Good Level of Development



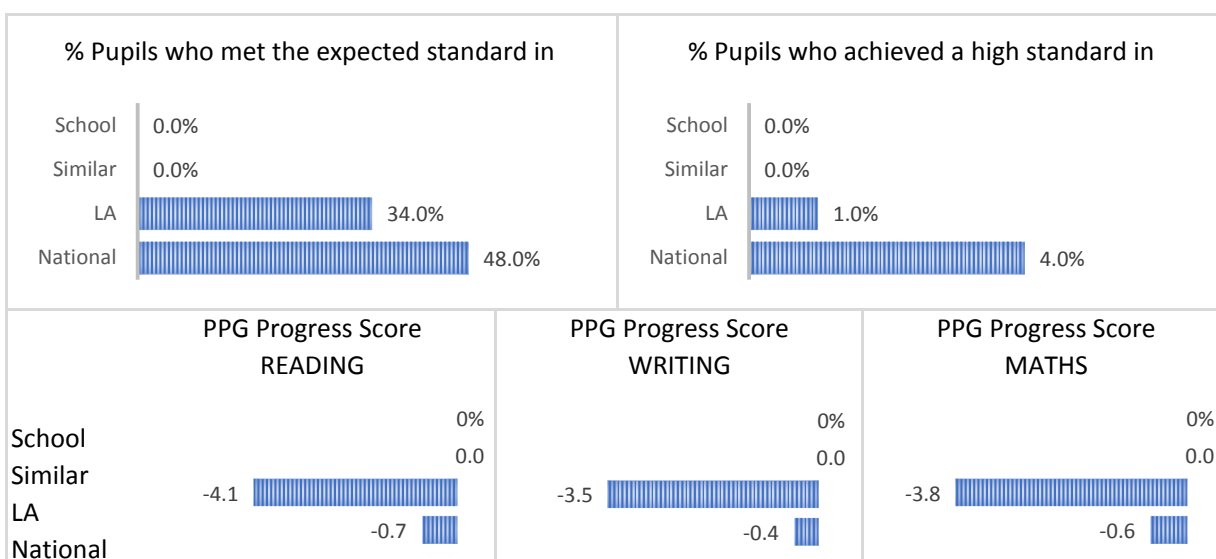
##### Phonics Screen Test Results



##### PPG Results by Subject



#### 2017/18 KS2 Benchmarking Data for Pupil Premium Pupils





### Further Supporting Commentary

The School did not have any KS2 outcomes for 2017-2018 as Year 6 was not part of the school at that time. 2019 will be our first year of recording KS2 outcomes.





## Rates, Abbreviations and Terminology

### Pupil Premium Rates (annually per pupil)

Primary School - Reception to Year 6	£1,320
Secondary School - Year 7 to Year 11	£935
Looked After Children (LAC)	£1,900
Service Children - Reception to Year 11	£300

### Abbreviations / terminology used in this report

PPG / Non-PPG	Pupil Premium Grant
Ever6	Pupils who have been in receipt of Free School Meals at any point in the last 6 years (for the 2017/18 year this goes back to May 2011)
EYFS	Early Years Foundation Stage - Includes pupils up to and including Reception
FSM	Free School Meals
KS1	Key stage 1 - Pupils in Year 1 and Year 2
KS2	Key stage 2 - Pupils in Year 3 to Year 6
KS4	Key stage 4 - Pupils in Year 10 and Year 11
Nat. / Nat. Av	National / National Average
NOR	Number On Roll
RW&M	Reading, Writing and Maths
SEND	Special Educational Needs and Disabilities
Disadvantaged	Includes pupils eligible FSM, Ever6 or are LAC
LAC	Looked After Children